
Program Results Framework

Country and Programme Name: Nigeria Inclusive Basic Service Delivery and Livelihood Empowerment Integrated Program

Purpose of the Programme: Contribute to reduced poverty and vulnerability in Nigeria by promoting increased access of the poor and vulnerable to basic social services, livelihood opportunities and job creation in the context of the North East emergency transition, recovery and peacebuilding framework.

RESULTS CHAIN		PERFORMANCE INDICATORS			MOV	RISKS/MITIGATION MEASURES
		Indicator (including CSI*)	Baseline	Target		
IMPACT	Reduced Poverty and Vulnerability in Nigeria	% Population below poverty line	51.9% (2010/11)	20% (2020) Vision 20:2020	Poverty Profile Report	<p>Security risk: resurgence attacks by Boko Haram could affect achievement of outcomes</p> <p>Mitigation: Program design includes security risk as part of the criteria for selection of beneficiary LGAs. More so, the development approach adopted by the programme design limits interventions in areas where security risk is still high. An implementation phasing strategy is also envisaged for Local Government Areas where security conditions have significantly improved and IDPs are returning.</p> <p>Risk: Inadequate Capacity of Executing Agency could affect implementation effectiveness and efficiency.</p> <p>Mitigation:</p> <p>The Programme integrates Capacity building interventions particularly in procurement and financial management for the PMU and where necessary, experts will be hired to reinforce gap capacities of the PMU.</p> <p>Risk:</p> <p>Persistence of harmful cultural practices could limit service delivery and nutrition outcomes</p> <p>Mitigation: Program includes advocacy campaigns aimed at sensitizing</p>
		Food poverty	41.% (2010/11)	Reduced by 75% (2020) Vision 20:2020	Poverty Profile Report	
		Unemployment rate	Total:10.4% (2015) Youth (15-34) 30.4% Male: 5.4% Female: 7.5%	Total:9 % (2021) Youth (15-34) 25% Male: 4.4% Female: 6%	SDG and national reports HIES reports	
		Underemployment rate	Total 18.7% (2015) Youth (15-34) 52% Male 15% Female 21.1%	Total 16% (2021) Youth (15-34) 49% Male 12% Female 15%		
OUTCOME	Improved basic social service delivery in health, education and water and sanitation in North East Nigeria	<u>Basic health</u> Underweight in children under 5 years of age (NE)	30.8% (2013) Underweight 25%	20 % by 2021	50% by 2021 (60% by both sexes)	
		Percentage of children age 12-23 months who received all basic vaccination (NE)	14.6% (2013) 25.7% male 24.9% female	25% by 2021		
		Percentage of birth by nurse or midwife (NE)	14.3% (2013)			
		<u>Basic Education</u> School attendance ratio at primary level (NE) % of pupils able to read at grade six Percentage of primary teachers possessing minimum professional knowledge and skills	46.7% (2013) – boys 41.5% (2013)-girls 28% (2013) 20% (2013)	55% by 2021 50% by 2021 40% by 2021		
		Rural WASH coverage % Population with safe water access, of which % are female (CSI) % Population with access to new hygienic HH toilets, % female (CSI)	34 % (2015) 30 % (2015)	80% by 2021 80% by 2021		
		<u>Schools and Primary Health WASH</u> % Schools and health centers with access to improved water sources on premises. % Schools and health centers with access to improved gender separated sanitation facilities, (CSI) with a handwashing facility with soap and water near or in the facility.	30% (2015) 25% (2015)	80% by 2021 80% by 2021		

		ODF & Hygiene Additional Communities achieved and maintaining Open Defecation Community Wide Status (declared and verified as ODF) % Pupils practicing hand washing at critical times, boys/girls % of households practicing safe solid waste disposal	NA NA NA	5000 20/25 30		against detrimental cultural practices. Risk: Incomplete support and lack of follow-up of trained youth and women could limit the effectiveness of MSME support programmes.
Employment generation and livelihoods enhanced in North East Region		Jobs created from Program interventions direct/temporary (out of which are youth ¹ male/ female)	0	Direct-7,740 Temporary- 4,700		Mitigation: Program shall target youth and women obtain all the support they require and use experienced implementing partners with a mechanism to ensure close follow up.
		% TVET graduates supported under the Program who are employed and earning income	0 (2016)	60%		
		% women /Youth MSMEs supported by the Program who have achieved productivity/ business or market linkages by end of Program.	0 (2016)	70%		
		% vulnerable household supported with productive assets under the Program with increased income	0	60%		
Component 1: Service Delivery						
1.1 Promoting restoration, access and utilization of basic social services in health, education and water and sanitation						
1.1.1 Improved infrastructure/ facilities for basic service delivery in health education and water and sanitation		No. of model PHCs ² / schools ³ / rehabilitated/constructed and supplied with material and basic equipment's	PHCs: 0 Schools: 0	PHCs: 30 Schools: 60 (2021)	Supervision reports	Annual and quarterly Program Progress Reports Supervision reports Annual and quarterly Program Progress Reports
		No of water systems rehabilitated No of hand-dug wells constructed No. of boreholes constructed No. of solar power pumped schemes & taps constructed No of integrated water/energy system with drip irrigation, cattle troughs		600 300 3000 600 500		
		No of Toilets Constructed in Schools No Toilets Constructed in PHUs		3000 360		
		Functionality of water and sanitation facilities	58%	90%		
		No. of health workers benefiting from training/ refresher courses ⁴	0	1000 50% female		
1.1.2 Enhanced delivery of basic services through skills acquisition/upgrading for service workers in water, sanitation, health and education systems		no basic school/head teachers receiving training/ in-service training		2000 40% female		
		No of unqualified teachers trained for appropriate certification		200 (60% women)		
		Sustainable EMIS development at both state and Federal level	National EMIS policy in place and adopted by states	All 6 States/Federal implement NEMIS policy and EMIS development		
		No. of LGAs Quality Assurance Officers trained on school monitoring and supervision		120		

	Number of teachers (Trainers of Trainers) trained in hygiene & sanitation promotion/% women	0	300/30%		
	Number of Trainer of Trainers trained for improved environmental sanitation and SWM (groundwater pollution prevention)/ % women	0	10000/ 40% women		
1.1.3 Community awareness strengthened on hygiene, sanitation water conservation and environment and Open Defecation Free Environment	Number of Hygiene Sanitation and Environmental health clubs formed or strengthened in schools/% girls	0	1000/40%		
	Number of Communities triggered for ODF (through CLTS)	0	10000		
	Number of Water Sanitation and Hygiene Committees created and/or strengthened	0	7260		
1.1.4 Social dialogue promoted for enhanced demand side accountability in service delivery in health, education and water and sanitation	%age of Program-supported ministries/agencies that use feedback and recommendation provided by satisfactory rate report	0	80% ⁵		
	Satisfaction rate on services provided by agencies supported by the programme (as measured by annual % increase in overall satisfaction rate in citizens' report cards)	42% ⁶	80%		
1.1.5 Basic Schools enrolment and participation enhanced and particularly for girls	No of schools equipped with recreational facilities	0	60		
	No of primary and JSS schools with low girl enrolment with motivational programmes in place ⁷ .		100		
	Number of SBMCs trained		250		
	Number of PTAs trained		250		
States effectively supported by the FMWR to reform RWSS service provision	Joint FGN/Sates/Development Partners WSS sector reviews held		Annually from 2017		
	% National Rural WSS budget allocated in line with the Investment Plan		80% by 2018		
Community nutrition programmes strengthened	No. stabilization care units (at hospitals/temporary facilities i.e., tents) in support of hospital-based management of severely malnourished children established – (Borno)	0	50		
	Children (12-23months, 1-4 years, 5-12 years) with SAM admitted to therapeutic feeding programmes	16.4% (2011)	20,000		
	Children (12-23months, 1-4 years, 5-12 years) with SAM who recovered under treatment		75%		

Risk: Weak targeting could limit the effectiveness of the cash grants scheme to IDPs

Mitigation: Program shall target youth and women obtain all the support they require and use experienced implementing partners with a mechanism to ensure close follow up

	No. of women that benefit from dietary counselling during their lactation and pregnancy Iron-acid folic supplementation for pregnant women		TBD	
	Vitamin A	80% 2014	90%2021	
	Deworming coverage	45% 2015	50% 2021	
	Nutrition early warning system available	TBD	TBD	
	%age of multiple micronutrient powder (Outpatient Therapeutic Program (OTP) for mgt. of sever acute mal nutrition	7,6%	10% 2021	
Component II: Economic Recovery- Empowering youth and women through Entrepreneurship, employment generation and tailored skills for labour market and livelihoods for Vulnerable households⁸ (IDPs)				
2.1 MSMEs and Entrepreneurship promoted	No of micro enterprises in agri business and wash businesses supported to improve their businesses	0	2,032 79% female	Supervision reports
	No. Rehabilitation / reconstruction of TVET/Skills acquisition centers and equipped	0	12	Annual and quarterly Program Progress Reports
	No. of construction/WASH artisans supported to upgrade their skills and productivity	0	2,100	
	No. of local master craft men mobilised and trained in skills acquisition apprenticeship programmes	0	600	
	No of unskilled youth trained through TVET/apprenticeship attachments to local master craftsmen (sex disaggregated) ⁹	0	2000 (50% female)	
	% unskilled youth trained who receive start- up kits and cash grant to start businesses (sex disaggregated)	0	At least 80% of artisans trained benefits from support	
	No. of PPP established for mgmt. of motorised/piped water supplies and for public sanitation, % managed by women		500/40%	
	No of artisans trained in maintenance of water facilities/% women		500/30% women	
	No. of women MSMEs trained in entrepreneurship and productive improvement and who receive mentoring and early-stage investment support ¹⁰ (at least 50% are youth)	0	1200	
	% beneficiaries with access to credit from a formal source by end of Program.	0	70%	
	No of prominent markets reconstructed	0	3 – Mubi (Adamawa) cattle; Borno cattle; and Fish markets	

2.2 Household food security and Agricultural Livelihood economic reintegration enhanced	No. IDP reintegrating farmers (in cooperatives) benefiting from agricultural packages/ grants and extension services	0	5000 (40% women)	Supervision reports	
	No. IDPs integrating fishermen who receive fishing gears and accessories/grants	0	1800	Annual and quarterly Program Progress Reports	
	% of beneficiary farmer cooperatives who receive agricultural extension services	0	100%		
	No. of Vulnerable ¹¹ households empowered with income generating ¹² activities for enhanced livelihoods.	0	1,200		
	Existence of Unified social registry developed for states to promote targeting of social safety nets	1 (Bauchi) out of 5 states	All six states		
Component III: Programme Management and Institutional Strengthening					
3.1 Institutions capacities strengthened in monitoring and evaluation.	Existence of adequate capacity to implement EMIS policy	NEMIS policy in place	Adequate capacity in place to implementation NEMIS policy (2021)	Supervision reports	
	Existence of capacity of national women empowerment fund to facilitate disbursement of loan schemes	Loan facility of N200million per state in place for 7 states including 3 states in north east (adamawa, Yobe, Borno)-no disbursement yet due to capacity constraints	TOT of 3200 women in loan management and repayment procedure's and BDS BDS to channel beneficiaries in M&E (2018) At least first level of disbursement take place by (2020)	Annual and quarterly Program Progress Reports	
	Existence of capacity to Office of VP, social investment unit for strengthened coordination of social inclusion programmes	Not in Place	Poverty map and clock for NE states		
	Existence of capacity of Ministry of labour and Employment to enforce and monitor private employment agency regulation.	Inadequate capacity in enforcement of private employment agency regulation	Capacity in place on Private Employment Agencies' Regulation, Monitoring and Enforcement		
3.2 Project activities implemented	Existence of Baseline survey report disaggregated by sex	None (2016)	Report prepared (2017)	QPR; IPRs	
	Existence of Project Implementation Manual with a gender and inclusion perspective	None (2016)	Manual prepared (2017)	QPR; IPRs	
	Timely implementation of project activities and preparation of reports, including audits.	n/a	Project activities and reports, including audit prepared and submitted on time	QPR; IPRs	

			(during project duration)		
	Existence of impact evaluation report	n/a	Report in place by 2021	QPR; IPRs; PCR	
Key activities <ul style="list-style-type: none"> • Rehabilitation of schools and clinics • Training to enhance basic service delivery • Water Supply and Sanitation Infrastructure integrating livelihood support • Capacity Building and Institutional Support • Livelihood support, skills and entrepreneurship training • Tracer studies for TVET graduates • Establishing a unified social registry • Institutional capacity building for PIU Staff and Stakeholder MDAs • Impact Evaluation of Programme 					

The implementation of IBSDLEIP will be governed by some basic principles:

- **Capacity building**

This will be done through a training programme for personnel at all levels, ensuring delegation of responsibilities down to “lowest possible level”. The programme itself will be based on community self-selection prioritization procedures. This will be done **through participatory approaches** to promote a genuine ownership of the facilities. The feeling of ownership is also to be promoted by a cost-sharing arrangement whereby the communities pay all the costs for operation and maintenance of the schemes.

Gender aspects are considered at all stages of the programme. An improved gender balance would benefit the society in many ways. In essence, this balance means that both men and women need to have equitable shares in the water and sanitation sector, but women need to be more actively involved in planning, management and operations, while men’s participation need to be promoted in non-traditional roles i.e., hygiene, sanitation and actual collection of water. Implementation of improvements have initial implications on household expenditures which also need to be discussed by both men and women.

- **Accountability and transparency**

This will be promoted through training in community management, transparent book-keeping, yearly auditing procedures, promotion of different methods for fund raising, preparation of by-laws and tariffs and participatory monitoring.

- **Sustainability**

The main means to achieve sustainable community managed schemes will be through promotion of critical analysis of needs, priorities and constraints at different levels to **strengthen the problem-solving capacity**. User involvement at all project stages will increase self-sufficiency. Community participation which includes women entrepreneurs especially in agro business,

involvement of women and the private sector for repairs and supply of spare parts are other important means. Use of simple and proven technology will be promoted.

- **An overall (or holistic) view**

Staff from different professions sometimes see the world from different angles. If they have a top-down approach and work in parallel with each other this may hamper collaboration and effective assistance to the rural communities. An interdisciplinary collaboration facilitates a broader overview or “a bird’s eye perspective” on the sector.

An over-all view and **build back better principles** will also be promoted between sectors like environmental protection, consideration of ways to improve technical aspects of operation of water supply and sanitation to better suit the users (ergonomic aspects), agricultural practices in the catchment area and of animal husbandry and other productive needs for water use, which may be brought up to influence the design.

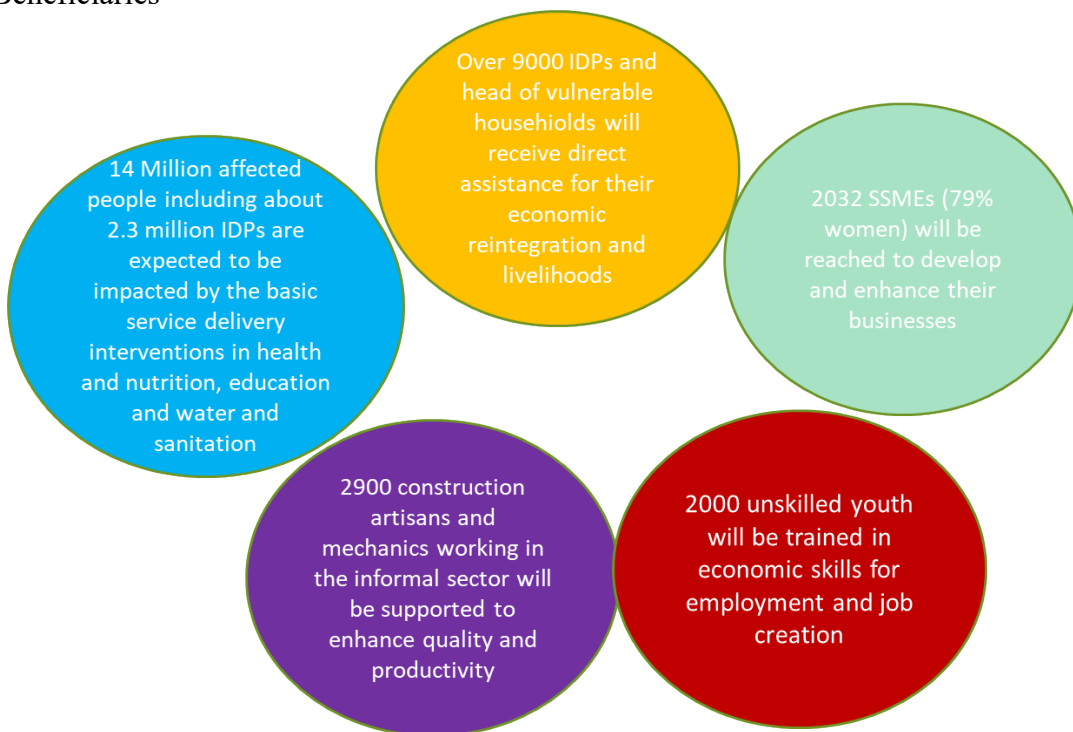
PROGRAM DESIGN

Objectives

The development goal is to contribute to reduced poverty and vulnerability in Nigeria in the context of the Northeast emergency transition, recovery and peacebuilding framework. Specifically, it will support to improve the quality of life by increasing access of the poor and vulnerable to basic social services in water, sanitation, hygiene, health and education; livelihood opportunities; food security and strengthened safety net systems in affected states in the Northeast. Psychosocial support, peace building, environment, climate change and gender equality interventions are mainstreamed in all components of the Programme.

The specific objective is to improve the quality of life by increasing access of the poor and vulnerable to basic social services in water, sanitation, hygiene, health and education; livelihood opportunities; food security and strengthened safety net systems in affected states in the Northeast. The Program will give particular attention to the youth, women and IDPs. Psychosocial support, peace building, environment, climate change and gender equality interventions are mainstreamed in all components of the Program

Program Beneficiaries



Description

The program seeks to restore/strengthen and expand basic social services in water, sanitation, hygiene, health and education; livelihood opportunities; food security and strengthened safety net systems in affected states in the Northeast. Psychosocial support, effective management and sustainability, peace building, environment, climate change and gender equality interventions are mainstreamed in all components of the Program;

Components and Sub-components

Component I: Service Delivery (USD 28.76 million) will promote restoration, access and utilization of basic social services in health, education and water and sanitation - with targeted interventions in infrastructure provision, skills acquisition and upgrading, rural water and sanitation reform and community-based nutrition support programmes. A key principle is ensuring better construction standards and contract terms to ensure durable infrastructure, systems development and human resources for sustainable services.

Basic education recovery

Expected Results by end of program:

- School attendance ratio at primary level (NE) increased from 46.7% for boys and 41.5% for girls to 55% for both sexes.
- Percentage of pupils able to read at grade six increased from 28% to 55%
- Percentage of primary teachers possessing minimum professional knowledge and skills increased from 20% to 40%

This sub-component focuses on both hard infrastructure and soft aspects that promote the recovery of quality basic education. It will support the reconstruction of 60 model primary schools with teachers' accommodation and library/computer facilities. All the new facilities supported under this component will be equipped with basic furniture, playing materials (recreational) and tools where appropriate. To enhance security a perimeter fence will also be constructed around the schools, following lessons learnt from prior experiences. The schools will also be equipped with solar electricity systems to light the classrooms and library and teachers' accommodation. There is a significant training component (soft aspects) which comprises series of capacity building programmes for head teachers, teachers and quality assurance officers from SUBEB. Training content covers inter alia school administration management and record keeping, pedagogy and core subjects, school monitoring and supervision. Selected existing unqualified teachers will be supported to pursue training for relevant qualification upgrade (about 60% will be allocated to women to promote female role models for girls in communities). There will also be tailored training courses for School Based Management Committees and PTAs from 250 selected Primary and JSS on their role responsibility and School Development Plan (SDP). This component also integrates an affirmative action for girls' education through the provision of school materials for girls in 100 identified primary and JSS with low girls' enrolments. The component will further promote psychosocial support and social cohesion programmes through school counselling sessions and community-based media. While a gender sensitive infrastructure strategy will be developed to guide the physical component, guidelines for gender informed training and capacity building will be developed to inform the soft interventions.

Basic Health

Expected Results by end of program:

- Underweight ratio of children under 5 decreasing from 25% to 20%.
- Percentage of children age to 23 months who receive all basic vaccination from 14.6% (25.7 for boys and 24.9% for boys) to 50% (for both boys and girls).
- Percentage of birth by nurse increased from 14.3% to 25%.

Primary Health Care Services Recovery. For interventions in health, the program focuses on the strengthening of PHCs and will support the reconstruction of 30 model Centers with nurses' accommodation and will be equipped with basic facilities and solar electricity. The support will also ensure the availability and use of SOPs including Standing Orders, job aids, flow charts and program specific clinical guidelines for key services, especially the priority impact interventions at PHCs. It will further support the strengthening of referral and outreach services to remote communities to ensure access to the last mile as well as routine immunization services through provision of solar powered refrigerators and cold chain equipment. The capacity building component will support selected primary health care training institutions to scale up the production of a critical mass of multipurpose and lower-level PHC workers. Health workers' will be trained on integrated health service delivery to improve diagnosis and management. There will also be specific trainings for pharmacy staff on the job.

The program further integrates service delivery satisfactory surveys through score cards and will create mechanisms for dialogue with communities and service providers on quality service delivery.

Community Nutrition Support to Scale up nutrition services for the most vulnerable population

As a follow up to the emergency support by the Bank to help curb the high levels of malnutrition in Bauchi state, it will also support Outpatient Therapeutic Program (OTP) in the primary health centers for the management of severe acute malnutrition without complications and supplementary feeding program for the moderate malnutrition. Bank's support will further ensure the community mobilization integration of CMAM into health services with other health and nutrition activities and approaches (IYCF, Growth monitoring, Essentials Nutrition's Actions and IMCI) and the training of Health Care Workers and Community Volunteers and provision of IE&C materials and counselling cards for health centers and communities. To promote good feeding practices, peer mothers support groups will benefit from food fortification and nutrition programmes.

Rural Water, Sanitation and Hygiene (WASH)

Anticipated Results by end of program:

- Percentage Population with safe water access, of which 50% are female increased from 34% to 80%.
- Percentage Population with access to new hygienic HH toilets, 50% female from 30% to 80%.
- Percentage Schools and health centres with access to improved water sources on premises increased from 30 to 80%.

-
- Percentage Schools and health centres with access to improved gender separated sanitation facilities, with a handwashing facility with soap and water near or in the facility increased from 25% to 80%.
 - 5000 Additional Open Defecation Free Communities [now changed to additional Communities achieved and maintaining Open Defecation Community Wide Status (declared and verified as ODF)]
 - Percentage Pupils practicing hand washing at critical times- 20% boys/25% girls

Rural Water and Sanitation Services Recovery and Development

This subcomponent consists of infrastructure provision as well as support the establishment/strengthening of institutional and organizational arrangements to maintain the water supply and sanitation systems put in place and ensure sustainable services are provided

Infrastructure: The infrastructure component will integrate environmental, climate change and green growth principles to ensure long term sustainability of the infrastructure. The activities to be carried out include (i) WS Infrastructure rehabilitation and construction in communities, including facilities for cattle watering and small scale agriculture, (ii) WS infrastructure in schools and health facilities – disaggregated by gender and physically challenged persons, integrating school gardening and establishment of school farmers clubs, and (iii) Sanitation facilities in public places (markets and motor parks - disaggregated by gender and physically challenged persons)

Institutional Support and capacity building: The main focus is on strengthening State Rural Water and Sanitation Agency, LGA water and sanitation units and user communities, and in addition, key stakeholders outside RUWASSA will also be supported to be able to fully play their respective roles in relation to the water and sanitation service provision. This will be accomplished through capacity building activities, development of tools and guidelines, and establishment of appropriate contractual arrangements. The activities to be carried out include (i) Strengthening of State Rural Water and Sanitation Agencies (RUWASSA) (ii) Establishment and Strengthening WASH units/departments at LGA level (iii) Community O&M support including formation and training of WASHCOMs, training of artisans, establishment of supply chains and (iv) establishment of PPP contracts for motorized schemes.

Hygiene, sanitation and environmental promotion in schools and communities

In order to ensure the safe use and handling of the water provided and that the benefits of the WSS services provided are realized, critical aspects of the related hygiene and environment and practices will be addressed by the project. This will be accomplished through capacity building activities, training, development of tools and guidelines, and establishment of appropriate contractual arrangements. This component is aimed at solving three key problem areas:

- Improvement of household conditions;
- In neighborhoods; improvement of healthiness and community hygiene and
- Elimination of open defecation and prevention of environmental degradation including pollution of the groundwater resources.

Key activities include (i) Hygiene and sanitation promotion in schools, health centers among communities and in public markets and motor parks, (ii) Community Led Total Sanitation, (iii) Setting up supply chains

for sanitation products (iv) Sanitation marketing (v) capacity building and training of State and Local Government Area Staff, Rural Water and Sanitation Agency, health, education and Ministry responsible for Water Resources and Rural Development to play their roles in hygiene and sanitation and solid wastes management These activities will encompass creating conducive culturally accepted environment for women to participate.

Rural Water and Sanitation Reform (Federal Ministry of Water Resources)

The Rural water supply and sanitation coverage in Bauchi State is low, and the financing gap and the low sustainability of investments made must be tackled. Reliable information on spending and achievements in the sub-sector is lacking. Reform of the urban water sector is essential to improving service provision. This subcomponent will include (i) strengthening institutional and organizational arrangements for sustainability of the services; (ii) strengthening State government's capacity to facilitate Rural WSS reform and performance improvements, (iii) Establishment of a comprehensive State Rural Water and Sanitation investment plan as well as sector coordination mechanisms, (iv) Development of Rural Water and Sanitation Implementation Manuals and Toolkit taking into account implementation in post conflict areas., (v) Strengthening Sector Performance Monitoring and reporting, (vi) Establishment of State Water Resources Data bank and (vii) Program Impact Evaluation (Baseline and post evaluation)

Component II: Economic Recovery (USD million)

Expected Results at the end of Program:

- 1,000 direct and 500 indirect Jobs created from Program interventions direct/temporary (out of which are youth male/female)
- 60 % TVET graduates supported under the Program who are employed and earning income
- 70 % women /Youth MSMEs supported by the Program who have achieved productivity/ business or market linkages by end of Program.
- 60 % vulnerable household supported with productive assets under the Program with increased income

This component will promote job creation and entrepreneurship with focus on youth and women. Additionally, tailored training to upgrade the skills of artisans and equip them to take better, the economic opportunities arising from public work programmes resulting from reconstruction and rehabilitation of infrastructure. The component will also support vulnerable households (IDPs) to enhance their economic reintegration and the building of livelihoods with focus on agribusiness. To ensure better targeting of interventions for the vulnerable, the Bank will support the development of state unified social registry which contributes to the development of the national registry.

Youth and SME skill development and entrepreneurship for job creation.

This subcomponent consists of infrastructure provision as well as support the establishment/strengthening of institutional and organizational arrangements for the delivery of skills development and entrepreneurship training for job creation.

Skills enhancement and acquisition for youth employability and entrepreneurship

Infrastructure

This will consist of construction/Upgrading of existing skills acquisition centres; industrial parks and TVET centres (2 per state)-

- Rehabilitation/reconstruction of infrastructure
- Equipment supplies for practical training.

Skills acquisition and entrepreneurship for unskilled youth

Training of unskilled youth in specific trades will be undertaken. The training will consist of:

- training of master craft men and putting in place apprenticeship schemes for artisans- plumbing; wood works; GSM repairs; etc. and
- tailored training for economic opportunities in value chain in livestock markets (including sheep and goats) and crop commodities. This will include opportunities where women are likely be active.

Key Activities

1. **Upstream:** Technical Assistance- feasibility assessment to design sustainable skills development programmes in viable trades for job creation and better incomes, exploring potential economic value chains and markets with specificity to each state. This will also include opportunities for access to finance. *(Advance procurement; part of retroactive financing where capacity exists)*
2. Curricula review and development to include soft aspects of training including psycho-social support; lifelong learning; entrepreneurship, apprenticeship and mentoring programs; certification.
3. Development of training modules.
4. Training of teachers/master craftsmen in modules and delivery.
5. Entrepreneurship Tours- An experience sharing and learning event to expose youth trainees to successful like-minded small-scale artisans and businesses.
6. Provision of starter packs/tools/grants
7. Tracer studies- M&E systems

Tailored and certified training for upgrading the skills and productivity of existing artisans and mechanics in informal sector. This aims at improving the training abilities of entrepreneurs as master-trainers and to enhance informal apprenticeship to be more innovative, of higher quality and more market responsive. (Linked to Government programme on job creation and rebuilding of Bauchi State).

Key activities:

1. Identification of master craftsmen (working with NDE master trainers- assessed and trained as TOTs)
2. IEC (local structures for awareness on this possibility)
3. Call for expression of interest
4. Assessment of selected successful applicants in terms of skills and learning needs
5. Curricula development and training modules (on the job and soft skills)
6. Equipment/tools; master craftsmen / trainees

Empowerment of micro enterprises in agri- businesses (focused on women owned)

The sub-component seeks to support existing micro-enterprises in recovering LGAs of the state in line with the states' governments' strategic focus and the federal government's job creation strategy. The intervention will focus on women owned enterprises mainly in the agri-business sector. Agriculture is the backbone of the state and the sector provides readily available raw materials that support downstream economic activities.

The objective of the intervention is to assist women entrepreneurs operating in women co-operatives to expand their businesses. Support will be provided to enable the enterprises:

- (a) Increase productivity and improve product quality,
- (b) Access finance,
- (c) Access markets,
- (d) Diversify products,
- (e) Add value to raw materials and
- (f) Access production equipment (e.g., 40% match up for basic)

This will contribute towards growth in income of the micro-enterprises and creation of jobs. The activities will include training programs in business management, product quality improvement, diversification of products, mentoring services and business support, linkages with financial institutions, linkages with markets and provision of equipment on loan. The identified activities with potential for business expansion include; peanut processing, oil extraction, fortification of local foods- e.g., soya beans/sesame seeds processing; rice milling and packaging; fishing and fish processing, animal fattening and selling, dairy products; etc.

Technical Assistance will be provided to support the intervention in two main areas. **The first** will be an assessment to identify the specific agri-businesses in each state that women are involved in and those with greatest potential for business expansion, product diversification and market penetration. **The second** part of the TA will be to build the capacities of BDS providers in SMEDAN (and/or recruited under the project) in each state and design the empowerment program based on the findings of the assessment. During the assessment, the consultants will also identify relevant business support institutions in the state that will play a role in supporting the micro enterprises. These will include institutions responsible for provision of skills (e.g., TVET), promotion of standards, financing etc. The consultant will also design how the equipment loan system will work to ensure sustainability of the program at the end of the project

Implementation Mechanism: Small and Medium Enterprise Development Agency of Nigeria (SMEDAN) office in the State will be responsible for the program delivery.

The cooperatives will be selected through a call for proposals based on criteria to be determined during the assessment. This however will include (i) functional cooperatives and/or those with greatest potential, (b) at least 40% of the beneficiaries to be the youth, (c) cooperative should have a bank account, (d) members all involved in on-going business activities, (e) cooperative operating in LGAs that are beneficiaries of the other components under the project.

- Strengthening capacities of cooperatives in micro agri business (functional and potential) in organization, entrepreneurship, quality assurance and productivity.

-
- quality improvement;
 - enhancing of productivity and
 - Access to finance.
 - Mentoring and coaching
 - Access to markets
 - Technical assistance in agric business with high economic potential prospects and improving markets; e.g., Peanut processing and oil extraction and cake; fortification of local foods- soya bean processing; rice milling; fisheries; animal fattening; kneading; beads making.
 - Equipment supplies; grinding and milling machines and packaging tools.
 - Upfront payment of matching up fund (rural banks; commercial bank etc.)

Livelihoods for Vulnerable Groups - Support to IDPs economic reintegration and vulnerable families; This sub- component will provide support to IDP returnees and vulnerable families in the state in order to improve their livelihoods and make economic reintegration possible. These would be achieved through the following interventions:

- **Provision of Agriculture packages** (farming inputs and equipment) such as fertilizers, improved seeds, chemicals, knapsack sprayers, hoes, water pumps, etc. to returnees for both rain fed and dry season agriculture. The project will support returnees who are willing to go back to their farms through the provision of basic farming inputs for both rain fed and irrigation agriculture. Farm inputs will be procured using community procurement processes and delivered to the farmers through the apex leaders of the farmers' cooperatives. For rain fed agriculture and dry season, farmers will receive farm inputs for one hectare and half hectare respectively. This support is to encourage farmers to go back to their farms to ensure food security and reduce dependence on Government and NGOs for food support.
- **Provision of Dairy cattle to vulnerable families** (demand driven- one cow per family concept). In order to augment the nutrition of poor and vulnerable families through milk consumption, the provision of dairy cattle through Artificial insemination or direct purchase may be considered.
- **Training and support on back yard vegetable gardening.** The Vulnerable farmers will be trained on the techniques of a simple backyard gardening and be supported with vegetable seeds. Backyard gardening lowers the cost of supply of healthy vegetables and provides fresh vegetables to the family for enhanced nutrition.
- **Empowerment of women through small scale poultry and small ruminant production:** Poultry production (broilers and layers) and small ruminant production such as sheep and goats provide income to women through the sale of eggs and meat respectively. The women will be trained on efficient management practices for a profitable poultry and small ruminant production thereafter be supported with a grant to start the business. A module for community poultry and small ruminant production per household shall be developed.
- **Promoting other income generating activities for women and youth:** These activities include groundnut, soyabean, cowpea, rice, maize and locust bean processing into various by-products; soap, pomade and beads making; tie and dye etc. Women and youths will be trained and empowered.
- **Provision of fishing gears and accessories to fishermen:** There are so many artisanal fishermen among the returnees from the IDP camps. These fishermen were engaged in exploiting the fishery

resource from open water bodies before the insurgency. Their fishing gears, boats and other accessories were completely destroyed during the insurgency and their businesses disrupted. The project will provide fishing gears and other accessories to the fishermen who are returning back to their communities. The downstream fishing activities will also be supported by the provision of smoking kiln to fish processors.

- **Homestead fish farming:** This is made possible in concrete ponds or plastic tanks customized for that purpose and require a steady water supply. The fingerlings and fish feeds are readily available, and the fish feeds can also be formulated locally to reduce cost. Water discharged from the ponds will be channel to a back yard garden. This module provides fish and vegetables to local markets within the community.

The program will **strengthen community based agricultural research and agricultural extension support systems** to enable relevant and timely planning and decision making by famers. One of the greatest constraints faced in achieving resilient food and income security in Bauchi State lies in the lack of skills, extension support and research required to diversify production into crops which are resilient to changing rainfall patterns and which offer higher income opportunities. The agriculture sector is faced with a huge population of poor and aged farmers and youths who are venturing into agriculture but lack the basic technical skills as a result of the absence of adaptive research and efficient extension delivery system. This project will therefore seek to increase the technical skills and awareness of farmers and farmers groups in the production, post-harvest processing and marketing of crops and crop varieties which are resilient to shifting rainfall patterns and low soil fertility. It will also build the capacity of small-scale farmer organizations to effectively represent and support the needs of their members. The Project will build community level resilience to food insecurity in highly vulnerable LGAs of the state.

Technical Assistance: The procurement of a TA will help identify number of farmer beneficiaries at all levels of intervention.

Component III: Institutional Strengthening and Programme Management (USD ... million)

Expected Result:

- Program delivered within time and budget

Institutional Capacity Strengthening: Stakeholder MDAs institutional capacities will be strengthened likewise the Programme Implementation Unit staff capacities will also be built to enhance implementation efficiency.

Program management consists of the following:

- Project Management TA support
- Project operations
- Project Monitoring and Reporting
- Procurement Audit
- Project Financial Audit
- Project Support Communication

-
- Project Financial and Technical Audit
 - Environmental compliance monitoring in accordance with ESMPs
 - Annual and Mid Term review
 - Impact evaluation
 - Gender toolkits to guide the implementation of these interventions will be developed

Environmental Impact and Climate Change

Overall, the program is environmentally beneficial. The project was categorized in May 2016 as Category 2. The provision of safe drinking water and proper sanitation facilities and construction of basic education and primary health care facilities involve simple, appropriate, low-cost technologies that do not pose high risk environmental consequences. The program has been classified to have a significant positive impact on the improvement of livelihoods and the environment, including reduction in groundwater pollution. Some moderate negative environmental impacts may occur, resulting mainly from the construction and rehabilitation activities. The key positive impact will be better and properly sited sanitation facilities that will reduce the risk of contamination of surface and groundwater resources.

The Program takes into account successful Integrated Water Management strategies including, among others: protecting and restoring the natural environment at provision points; use of green energy technologies such as solar pumping systems; conjunctive use of surface water and ground water. The Program will also promote the use of improved seed varieties that are high yielding, drought-resistant and early maturing as well as soil and water conservation measures to ensure optimal crop productivity in food security interventions. The program also integrates reforestation which will positively impact on reduction emissions. The necessary evaluations were done in line with the Bank's Climate Safeguards System guidance for a category III project.

Social Impact

Social Economic

In the context of recovery and peace building in the Bauchi State, the program will assist the poor and vulnerable (especially IDPs) to resettle and restart their livelihood, which will contribute to stabilizing the social fabric and spur recovery. It enhances mobility and contributes to productivity and efficiency of the beneficiary communities. The water and sanitation components will reduce health risks and contribute to investments in other social services as well. The program operation creates jobs in the construction process (permanent and temporary) and affects on a direct basis, the lives of the rural and urban populations in the state. The program will have positive social impact by protecting the most vulnerable individuals and households, including about 500,000 IDPs, women, youths, and children in conflict affected communities. The program activities will contribute to spur local economic activities by enhancing economic liquidity, as well as rebuilding basic service delivery and market infrastructure. Other benefits include; (i) formal jobs resulting from scaled up services i.e., professionalised water and sanitation service providers and the private mainly women operators managing WASH facilities at markets. (iii) State government personnel across agencies and NGOs will gain service delivery and community nutrition and hygiene promotion skills to be used beyond the project.

Gender

Bank intervention will aim at increased access of women, girls and the vulnerable, affected by the conflict, to social services; water and sanitation, education, and health. In terms of increased participation of women in the social services delivery, the program is intended to ensure that at least 30 % and 40% of the water sector players and unskilled youth to be trained and shall be women. It is also anticipated that 30% of the WASHCOM executives shall be women. The program will ensure gender sensitive infrastructure through active women participation and consultation and ensuring catering for gender specific needs (i.e., toilets with menstrual hygiene

facilities for adolescent girls in schools). To increase women's access to economic opportunities the Bank intervention will support the entrepreneurship, growth and productivity of women led micro agribusinesses, and an allocation of a specific amount will be ring fenced for this purpose.

Project implementation teams, contractors, NGOs involved, different suppliers, will be sensitive of the socio-cultural situation. Moreover, the program will ensure series of communications and awareness raising campaigns using different media platform on the importance of women's participation and empowerment.

Youth

The youths will be engaged in the production of low-cost raw materials for construction of water and sanitation facilities, schools and health clinics and TVET centres. A number of small scale services providers including pump mechanics and other artisans consisting mainly of youths from the communities will be trained in the construction and maintenance of the facilities and viable economic skills to ensure sustainability and also empower them by enhancing their income earning capacities. In addition, the programme will integrate a young graduates attachment programme to enhance their employability. The youths will also comprise 40% of the Hygiene Education and community nutrition Trainers of Trainers that will be trained under the program

Involuntary resettlement

There will be no involuntary resettlement. The health, education and water and sanitation infrastructure will be developed based on the nature and type of facilities and decision-making processes by communities in site selection (the facilities are mainly on unencumbered land or upgrade on already existing facilities). The Program shall carry out stakeholder consultations with communities, community leaders, local authorities and other stakeholders. Grievance mechanisms shall be implemented in the Program, in cases where "green" sites are proposed for the construction of facilities. Should the scope of the activities change in such a way that result in land acquisition, the Bank's involuntary resettlement policies and procedures shall be followed.

Institutional Arrangements

Implementation arrangements will be at 2 levels -: Federal and State Levels.

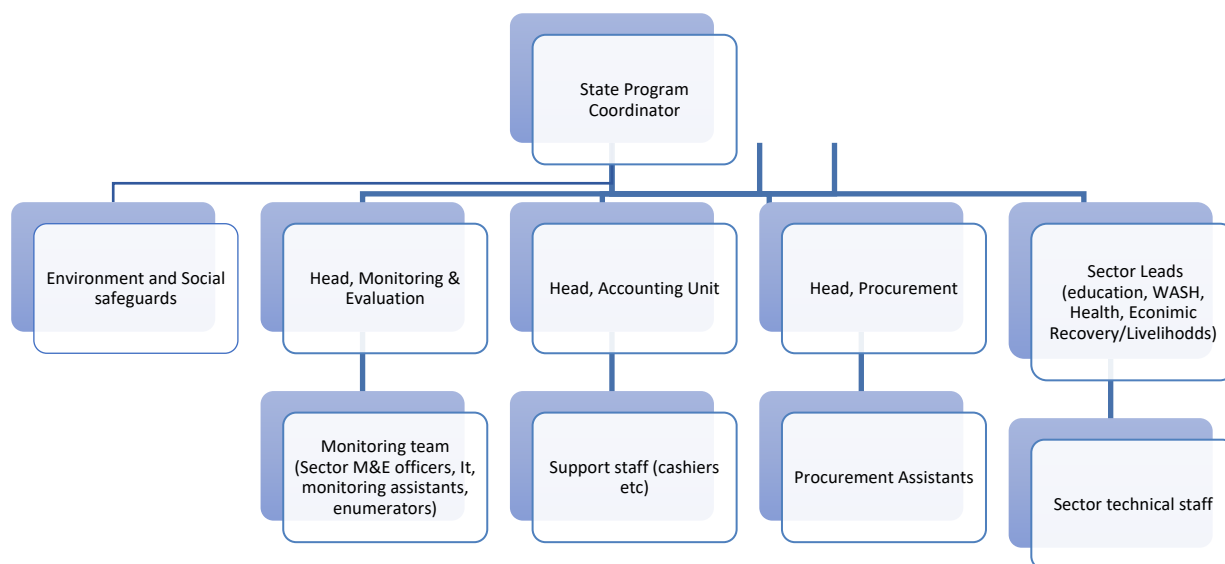
State components

At the state level, the Governments are the originator of the program and the ultimate borrower of the ADB and ADF loans (on-lent by the Federal Government). The State Governments will each establish a State Steering Committee chaired by the Secretary of State to the Governor or any person duly appointed by the Governor. Membership will comprise Commissioners from Ministries of Water Resources, Education, Health, Agriculture, Commerce, Women Affairs, SMEDAN, Finance, Budget and Economic Planning, and Local Government, Chieftaincy & Community Affairs. Financier representatives (AfDB and other development partners) may participate as observers with members. The State level steering committee will provide guidance and oversight to the state PIU and will undertake the following: (i) endorse annual work plans, (ii) Vet the prioritisation of LGAs (ii) monitor progress and review quarterly progress reports, and (iv) to address any issues raised to their attention that risk preventing the Program achieving its objectives. The Steering Committee will meet quarterly and designate officials to sign withdrawal applications and other correspondences with the Bank.

Each state will also establish a State Implementation Unit (PIU), headed by a program coordinator appointed by the State Government, with designated sector leads from the participating state MDAs, including; SUBEB, SPHCDA , Commerce, SMEDAN, Agric, Education, women, RUWASSA, Youth, Budget & Economic Planning, LG&CA, Justice and OSAG. The PIU will be responsible for coordination of implementation and reporting among participating ministries. The representative sector lead/component head will be directly responsible for implementation of specific programme activities under his/her purview.

The state PIU will also host the secretariat of the State Steering Committee.

State Program Implementation Structure



Sustainability

The Bank interventions form part of the existing national programmes for the North East recovery put in place by the States and Federal governments within a defined framework of mainstreamed expected outcomes and outputs of development interventions. Thus, the sustainability of the sub-programmes can be explained by its country ownership driven approach in which the felt needs of the communities are well incorporated all through the setting of priorities. The program supports and promotes the communities to be the real owners of the facilities provided. Beneficiary communities are to take better care of services and contribute to the capital costs and will be responsible for their operations and maintenance costs, particular for WASH facilities.

The existence of the community Water Supply, Sanitation and Hygiene Committees (WASHCOMs), School Based Management Committees and health facility management committees is a corner stone of the sub-Programs implementation and operation. The committees will be further empowered in community mobilization, engagement and resource mobilization to help put in place an effective oversight mechanism of infrastructure provided and ensure community contribution on regular basis. In order to further improve on maintenance

and sustainability of water supplies, the management of the rural water schemes will be professionalised using small scale private management contracts.

Further, the economic empowerment programmes are focused on empowering youths and women to achieve self-sustained viable ventures linked to the productive sectors of the economy, instead of depending on government for provision of empowerment opportunities. It is expected that training through skill acquisition programmes will enhance the sustainability of the youths in different fields of trade. A key component of the training programmes is to inspire the culture of creativeness in youth and women to make them productive and self-reliant.

Technical sustainability of the program is assured through the use of simple technologies for which the relevant technical expertise exists in the state. The quality of community training and support for O&M as well as the quality of the initial construction are key factors for sustainability. Under the program “build back better” principle applying improved fit to purpose designs and enhanced contracts management and third-party verification/certification of services will be applied before payments for services and works. In addition, there will be training of community representatives and local service providers in operations and maintenance of the selected technology options. Environmental sustainability will be assured by ensuring that all negative impacts of sub programme are identified and addressed as part of implementation activities. The program will make use of the community development plans to identify and assist the poorest of the poor access their basic needs for water and sanitation services.

Procurement procedures

The Procurement Framework supports operations and enhances procurement systems in order to obtain optimal value for money based on mutually supporting and reinforcing principles of economy, efficiency, effectiveness and equity. This is achieved using processes and procedures that are competitive, fair and transparent.

Procurement of Goods, Works and Services necessary for the execution of the Project shall be carried out in accordance with the Bank's *Procurement Policy for Bank Group Funded Operations, October 2015* (BPM), as amended from time to time, using the Bank's Standard Solicitation Documents (SSDs) as follows:

Expenditure Category	Open Bidding (OCB)	Competitive Bidding (LCB)	Method of Procurement	Threshold (Unit of Account-UA)	Prior Review
	Limited Bidding (OCB)	Competitive Bidding (LCB)			
Works	OCB (International)		ICB	≥ 6,000,000	All
	OCB (National)		NCB	≥ 30,000	None
		LCB	Shopping	< 30,000	Shortlist only
Goods/Non-Consulting Services	OCB (International)		ICB	≥ 600,000	All
	OCB (National)		NCB	≥ 20,000	None
		LCB	Shopping	< 20,000	Shortlist only
Consultant Services	OCB		QCBS International shortlist	≥ 200,000	All
	OCB		QCBS/LCS/CQS Shortlist of National Consultants/NGOs	≥ 200,000	TOR/Estimates only
		OCB/LCB		No Limit	All
All		Single Sourcing (SS)	Direct Contracting	No Limit	All

IMPLEMENTATION GUIDELINES AND PROCEDURES

General

Program Flowchart and Sequencing

While the planning cycle is circular for the over-all IBSDLEIP containing the usual steps of fact-finding, planning, programming, budgeting, implementation, monitoring and evaluation, the community based sub-projects will be more **process oriented** than production oriented. This means that at community level the Community Committees (i.e., WASHCOMS, SBMCs, PTAs, HMCs etc) and the community together will repeat this cycle as often as need arises or as a result of regular monitoring activities as illustrated below:

Demand driven approach within the context of prioritisation

There are many criteria which need to be fulfilled before a community will be eligible for IBSDLEIP investments. Below is a summary of the screening to be made which in essence mean that we are talking about **a negotiated demand rather than purely demand driven**.

Steps which will be followed:

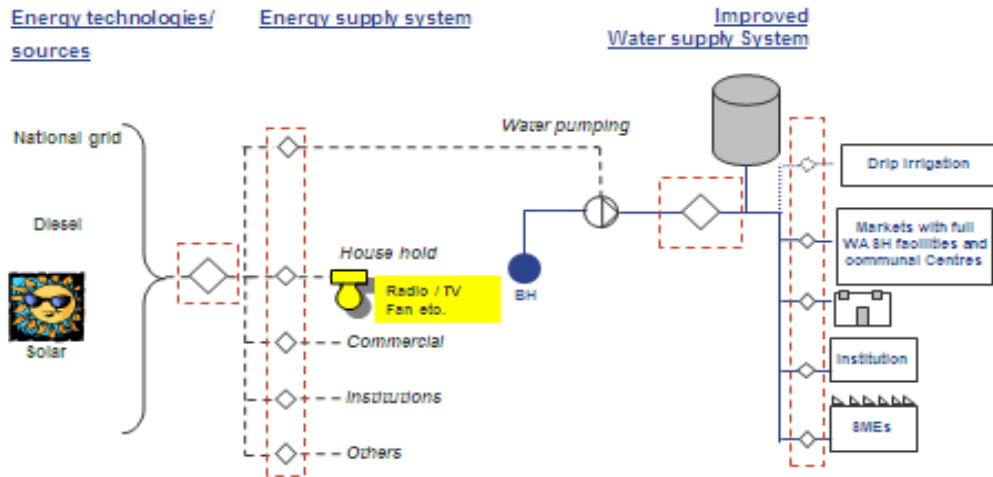
- LGA prioritisation/allocation of resources based on population, present basic services coverage, poverty, nutrition status and diseases in the LGA etc
- Community prioritisation/allocations based on the same criteria as above
- Community eligibility is assessed according to social, technical and economic criteria
- Prioritisation between the eligible communities will be carried out based on a number of specific criteria.

Special Features

- Inclusive development (Gender- female and male, Persons with disabilities, elderly etc.)
- Planning ensuring participation of women in all stages of the project as well as training women entrepreneurs to provide services.
- Youth employment and business opportunities.
- Address rural electrification i.e., integrated energy systems for pumping of water, lighting for institutions and community centers, providing for cold chains in health units and providing energy for drip irrigation (as illustrated in next figure).

Water and Sanitation for Rural Transformation

Water – Energy supply- Integrated Rural development concept including metering



KEY PRINCIPLE- BUILD BACK BETTER

IMPLEMENTATION FLOW CHART

